

Essential Manifold Accessories

Swivel Gauge Adaptors

Parker's range of swivel gauge adaptors has been designed to provide 360° rotational movement enabling maximum positional orientation of installed gauges and measuring instruments. A fully contained sealing mechanism ensures total system integrity and offers the user up to 10,000 psig (690 barg) working pressure. Silver plated swivel nut thread and bearing area prevent threat galling of stainless steel threads and allow trouble free repeatable re-assembly.

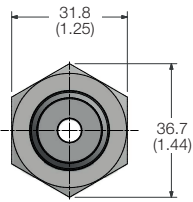
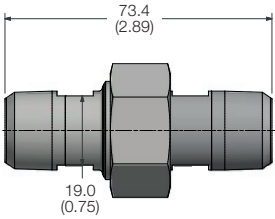
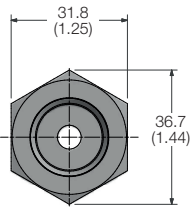
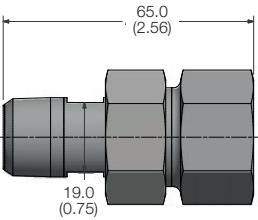


Features

- Silver plated swivel thread and bearing surface to prevent thread galling and maximising re-make opportunities
- Variety of thread options
- Compact design
- Fully contained and retained sealing mechanism

Specification

- Available in materials listed below. The nut as standard is 316 Stainless Steel.
- Maximum pressure rating: 10,000 psig (690 barg)
- Maximum temperature rating: 538°C (1000°F)
- Fully heat code traceable



Ordering information:

Example 1: **SGS8M8F3HP**
Example 2: **SGS8RDM8RFNC**

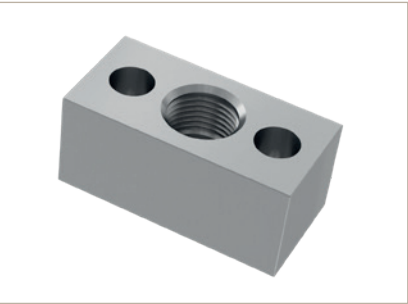
| Series | | | |
|--------------------------|--------------------------------------------------------|--------|----------------|
| SG | Swivel gauge adaptor | | |
| Materials | | | |
| S | 316/316L Stainless Steel | HC | Alloy C276 |
| 6MO | 6MO Sup. Aust. St.Steel | T | Titanium Gr. 2 |
| M | Alloy M400 | 825 | Alloy 825 |
| D1 | Duplex 22 Cr. Steel | 625 | Alloy 625 |
| D2 | Super Duplex 25 Cr. Steel ¹ | | |
| Connections - Standard | | | |
| Inlet | | Outlet | |
| 4M | 1/4" NPT Male | 4F | 1/4" NPT Fem. |
| 6M | 3/8" NPT Male | 6F | 3/8" NPT Fem. |
| 8M | 1/2" NPT Male | 8F | 1/2" NPT Fem. |
| 4M | 1/4" NPT Male | 4M | 1/4" NPT Male |
| 6M | 3/8" NPT Male | 6M | 3/8" NPT Male |
| 8M | 1/2" NPT Male | 8M | 1/2" NPT Male |
| Other Connection Options | | | |
| *#F | Fem. connection | | |
| *#M | Male connection | | |
| K | BSPT BS21, ISO7/1 - British Standard Taper Pipe thread | | |
| R | BSPP BS2779 - British Standard Parallel Pipe thre | | |
| RD | DIN 16284/16288/EN837 BSPP gauge connection type | | |
| Options | | | |
| 3 | Graphite Seal option ¹ | | |
| HP | High Pressure 10,000 PSI option | | |
| NC | NACE option | | |

| | | | |
|----|---|---------|-----|
| SG | S | 8M8F | 3HP |
| SG | S | 8RDM8RF | NC |

* Insert size designator.
Insert specification designator (K/R/RD).

¹ Interface seal material PTFE as standard. Graphite seal optional.

Instrument Flange Adaptors (Kidney/Oval Flanges)



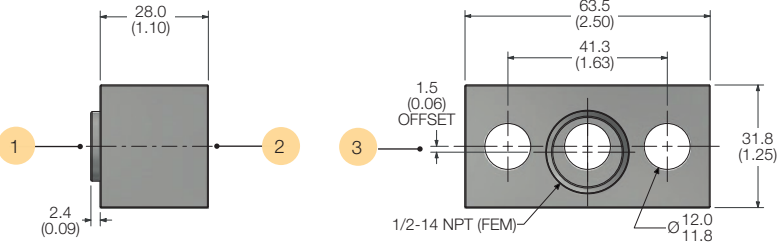
Example shown with traditional 1/2" NPT Fem. connection.



Example shown with integral A-LOK® connection.



Example shown with inverted integral A-LOK® connection.



Example of the instrument flange adaptor with 1.5mm offset connection (Code **OS**) which accommodates variation of impulse line centres between 51-57mm.

Ordering information:

Example 1: **HKSM12ASB3**
Example 2: **HK6MOIM12ASB3**
Example 3: **HKD18FOSSB**
Example 4: **HKSBW83**
Example 5: **HK625BW8AXSB3**

| | | | |
|----|-----|-------|------|
| HK | S | M12A | SB3 |
| HK | 6MO | IM12A | SB3 |
| HK | D1 | 8F | OSSB |
| HK | S | BW8 | 3 |
| HK | 625 | BW8AX | SB3 |

| Series | | | |
|------------------|------------------------------------------|----------------------|---------------------|
| HK | Kidney/oval flange | | |
| Materials | | | |
| S | 316/316L Stainless Steel | HC | Alloy C276 |
| 6MO | 6MO Sup. Aust. St.Steel | T | Titanium Gr. 2 |
| M | Alloy M400 | 825 | Alloy 825 |
| D1 | Duplex 22 Cr. Steel ¹ | 625 | Alloy 625 |
| D2 | Super Duplex 25 Cr. Steel ¹ | | |
| Connections | | | |
| 4F | 1/4" NPT Fem. | I4A | 1/4" A-LOK Inverted |
| 6F | 3/8" NPT Fem. | I6A | 3/8" A-LOK Inverted |
| 8F | 1/2" NPT Fem. | I8A | 1/2" A-LOK Inverted |
| 4A | 1/4" A-LOK ² | IM6A | 6mm A-LOK Inverted |
| 6A | 3/8" A-LOK ² | IM10A | 10mm A-LOK Inverted |
| 8A | 1/2" A-LOK ² | IM12A | 12mm A-LOK Inverted |
| M6A | 6mm A-LOK ² | | |
| M10A | 10mm A-LOK ² | | |
| M12A | 12mm A-LOK ² | | |
| Butt Weld - Pipe | | | |
| Type | Size | Schedule (Thickness) | Extension |
| BW Butt Weld | 4 1/4" NB | * Sch.80 | * 25mm |
| | 6 3/8" NB | A Sch.160 | Y 75mm |
| | 8 1/2" NB | B Sch.XXS | X 100mm |
| | 12 3/4" NB | | |
| Options | | | |
| OS | Offset 1.5mm option ³ | | |
| SB | Stainless Steel Bolt option ⁴ | | |
| 3 | Graphite Seal option ⁵ | | |
| NC | NACE option | | |

¹ Not available with tube connections.

² For CPI™ change A to Z, example: **M10Z**.

* No designator required.

³ Offset option only available on Fem. threaded connection; accommodates variation of impulse line centres between 51-57mm. See diagram above.

⁴ Bolt material as standard HT Carbon Steel. Stainless Steel optional. Both in accordance with IEC 61518.

⁵ Interface seal material PTFE as standard. Graphite seal optional. Both in accordance with DIN IEC 61518 Type A.

OTHER NOTES:

- Tube connection selection as per Parker recommended tube guides.
- Flange interface connection to DIN IEC 61518 Type A.
- Inverted A-LOK® connections supplied with Socket Cap Head bolts. All other connections supplied with Hex Head bolts.
- Not all options/combinations are necessarily available in each single product model type. Care should be taken to consult the main catalogue. If in doubt, please consult your local Parker representation.